



Owner's Guide

SPH-D720

March 29, 2011

NSOG-S-1.1-001

Legal

Copyright © 2011 Google Inc. All rights reserved.

Google, the stylized Google logo, Android, the stylized Android logo, Nexus, the stylized Nexus logo, Nexus S, and the stylized Nexus S logo, are trademarks of Google Inc. All other company and product names may be trademarks of the companies with which they are associated.

Availability of Google applications, services, and features may vary by country, carrier, and manufacturer.

For more information about your Nexus S phone, visit
<http://www.nexusshelp.com>.

Google™

Contents

Your phone and accessories 4

What's in the box 5

Getting to know your phone 6

Installing the battery 7

Open the phone's back cover 7

Replace the phone's back cover 8

Remove or insert the battery 8

Charging your phone 10

Charge the phone 10

Using the stereo headset 11

Turning the phone on and off 12

Turn on the phone 12

Turn off the phone 12

Specifications 13

Your phone and accessories

Your Google™ Nexus S™ phone comes with a number of accessories, including a headset, USB cable, and charger. For safety reasons, the battery is not shipped inside the phone, so you need to insert it and charge it fully before using your phone. This guide describes the parts of your phone, how to install and charge the battery, how to turn the phone on and off, and other useful information.

For more information about using the Android™ mobile technology platform that runs on your phone, including the basics of using it to place phone calls and how to use its applications to browse the web, read email, and so on, visit your carrier's support site and refer to the *Android User's Guide*, available from <http://www.nexusshelp.com>.

In this section

- "What's in the box" on page 5
- "Getting to know your phone" on page 6
- "Installing the battery" on page 7
- "Charging your phone" on page 10
- "Using the stereo headset" on page 11
- "Turning the phone on and off" on page 12

What's in the box

Your Google™ Nexus S™ phone comes with the following accessories.



Health and safety
and warranty
booklets

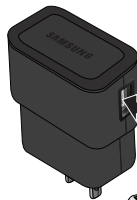


Nexus S phone

Battery



Charger and USB
data cable (plug
varies by country)



USB cable



Headset

Getting to know your phone



Before you use the phone, insert the battery and charge it fully. (See “Installing the battery” on page 7 and “Charging your phone” on page 10.)

Other sections in this chapter describe the use and function of the headset, turning the phone on and off, and more.

Your carrier's support site and the *Android User's Guide* (available from <http://www.nexusshelp.com>) describe how to place calls and other basic features of the phone, including turning it on for the first time.

Be sure to keep the front and back camera lenses clean with a lint-free cloth. Smudges and fingerprints can distort your pictures. The back camera's LED flash is next to the lens. Taking pictures and shooting videos is described in the *Android User's Guide*.

Installing the battery

To install or replace the battery, you must remove the phone's back cover.

You must install the battery before you can use the phone.

Open the phone's back cover

- ▶ Hold the device firmly and locate the cover release latch. The release latch has a small indentation, just large enough to insert a fingernail, and is located above the camera lens. Place your fingernail in the opening and firmly lift the cover off the device.



Replace the phone's back cover

- ▶ Place the cover on the back of the phone and push it down into place.



Remove or insert the battery

You must open the phone's back cover to remove or insert the battery.

- 1 Turn off the phone.
See "Turning the phone on and off" on page 12.
- 2 Lift out the battery by slipping your finger into the small opening next to the battery.



- ▶ Insert the battery by aligning the gold contacts on the phone and the battery and then gently pressing the battery into place.



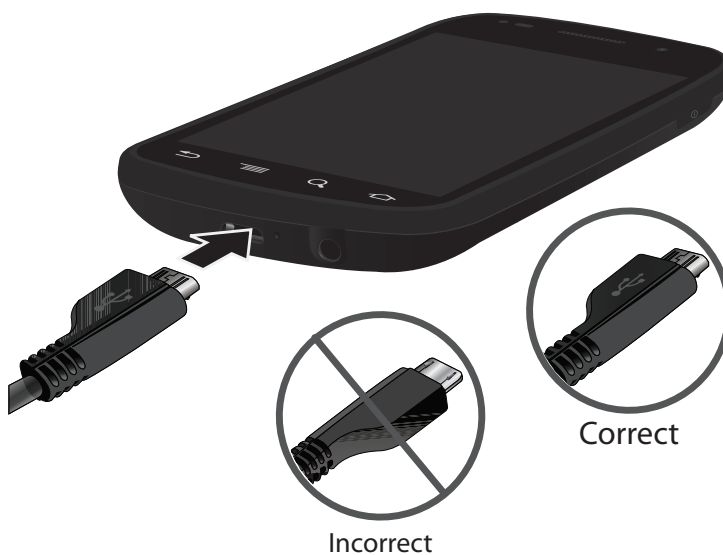
Charging your phone

Before you can use your phone, you must charge it fully.

In addition to charging from an AC outlet, the phone also charges when it is connected to a computer's USB port with the included USB cable. For information about connecting the phone to a computer, see the *Android User's Guide*.

Charge the phone

- 1 Plug the appropriate end of the supplied charger into an AC outlet.
- 2 Plug the appropriate end of the USB cable into the charger or into the USB port of your computer.
- 3 Plug the other end of the USB cable into the micro USB port on your phone.



When charging, the screen displays a battery charging status icon.

- 4 When the phone is fully charged, disconnect it from the charger.

Using the stereo headset

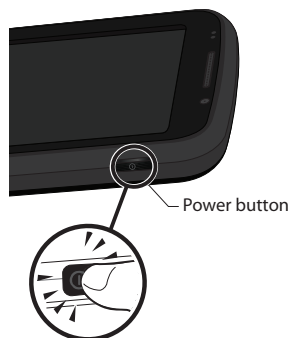
The stereo headset plugs into the phone's 3.5mm headset jack.



You control the headphones' volume with the phone's **Volume Up/Down** button and with the applications on your phone (as described in the *Android User's Guide* and in the documentation for your applications).

Turning the phone on and off

Use the power button to turn the phone on and off.



Turn on the phone

- ▶ Press the **Power** button for a few seconds, until the screen illuminates.

The first time you turn on the phone, you are welcomed to Android and prompted to sign into your Google Account. For more information, consult your carrier and the *Android User's Guide*.

Turn off the phone

- 1 Press and hold the **Power** button until a menu opens.
- 2 Touch **Power off** in the menu.
- 3 Touch **OK** when asked to confirm that you want to turn off the phone.





For more about working with the touchscreen and menus, see the *Android User's Guide*.

Specifications

The Nexus S phone features the following specifications. For the location of many of the features in this table, see the diagrams in "Your phone and accessories" on page 4.

The version of the Android mobile technology platform installed on your phone may add or change some of your phone's capabilities. For more information, consult your carrier and the resources at <http://www.nexusshelp.com>, including the *Android User's Guide*.

Connectivity	CDMA: 1900, 800 EVDO Rev. A 2.4 GHz Wi-Fi: 802.11 n/b/g Bluetooth 2.1+EDR Near Field Communication (NFC) Assisted GPS (A-GPS) microUSB 2.0
Display	4.0" WVGA (480x800) Curved glass screen Super AMOLED 235 ppi Capacitive touch sensor Anti-fingerprint display coating
Size and weight	Height: 123.9mm Width: 63mm Depth: 11.2mm Weight: 131g

Hardware	Physical buttons: Power and Volume Up / Down Illuminated soft buttons: Back  , Menu  , Search  , and Home  Haptic feedback (vibration) Three-axis gyroscope Accelerometer Digital compass Proximity sensor Light sensor
Processor and memory	1GHz Cortex A8 (Hummingbird) 16GB iNAND flash memory
Audio	3.5mm, 4-conductor headset jack (stereo audio plus microphone) Earpiece Microphone Software noise-cancellation
Cameras	Back: 5 megapixels (2560x1920) 720x480 video resolution H.264, H.263, MPEG4 video encoding Auto focus Flash Front: VGA (640x480)
Battery	Removable 1500mAh Li-ion battery Standby Time - up to 9.58 days (230 hours) Talk Time - up to 6 hours